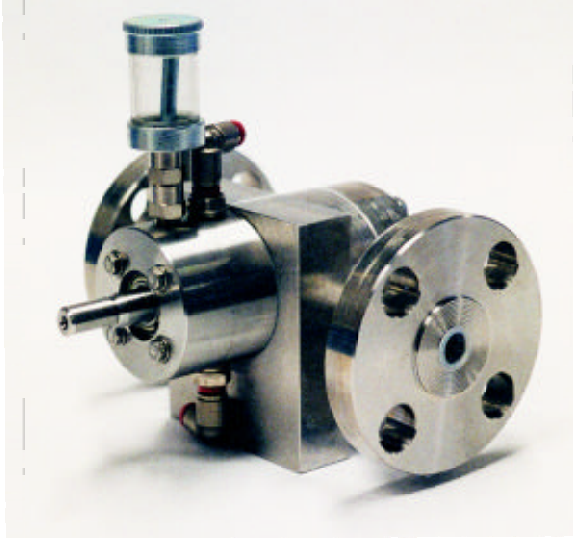


# ULTRA POMPE - GEAR PUMPS

## C SERIES

### FEATURES

Foot mounted pump to accommodate axial couplings. Pumps can be bidirectional, depending on seal.  
 Complete packages available including base plate, coupling, reducer, motor, and controls. Capacities from 1 to 3.000 cc/rev  
 Pressures up to 435 psi ( 30 bar ), standard temperatures up to 428° F ( 220° C )  
 These pumps cannot be used to pump fluids with abrasive propieties.



### SIZE

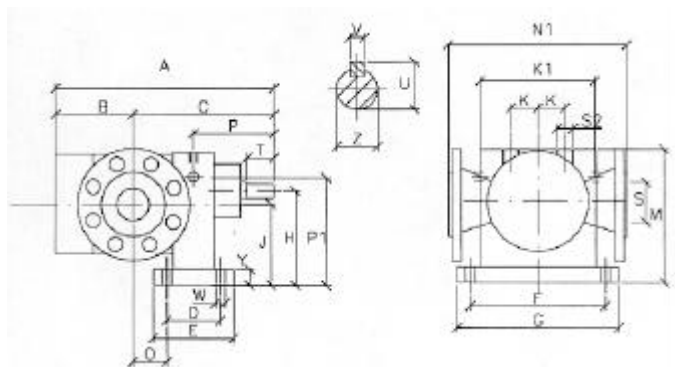
		VOLUMETRIC DELIVERY ( cc/rev )	
		MAX FLOW RATE ( l / h )	
		RPM	
C2	2	180	1.500
C4	4	360	1.500
C9	9	810	1.500
C14	14	1.260	1.500
C28	28	2.520	1.500
C42	42	3.780	1.500
C70	70	4.200	1.000
C105	105	6.300	1.000
C200	200	12.000	1.000
C300	300	18.000	1.000
C400	400	24.000	1.000
C500	500	30.000	1.000
C740	740	33.000	740
C1570	1570	47.000	500
C3000	3000	54.000	300

NOTE: DELIVERY, FLOW RATE AND RPM DEPENDENT ON THE FLUID CHARACTERISTICS AND OPERATING CONDITIONS

### MATERIAL TABLE:

Pump Housing: Stainless Steel 316 L from rolled bar  
 Gearshafts: S31803 Duplex St.St. From rolled bar ( One Piece )  
 Shaft Seal: Single carbon/ceramic/Miton and external Viton Lip Seal as standard  
 Available Silicon Carbide / Viton, Double Mechanical Seal or Gland Packing  
 Bearings: Fitted Glass ( PEEK ) or Bronze  
 Connections: Standard Threaded ( Optional threaded or Welded Flanges )

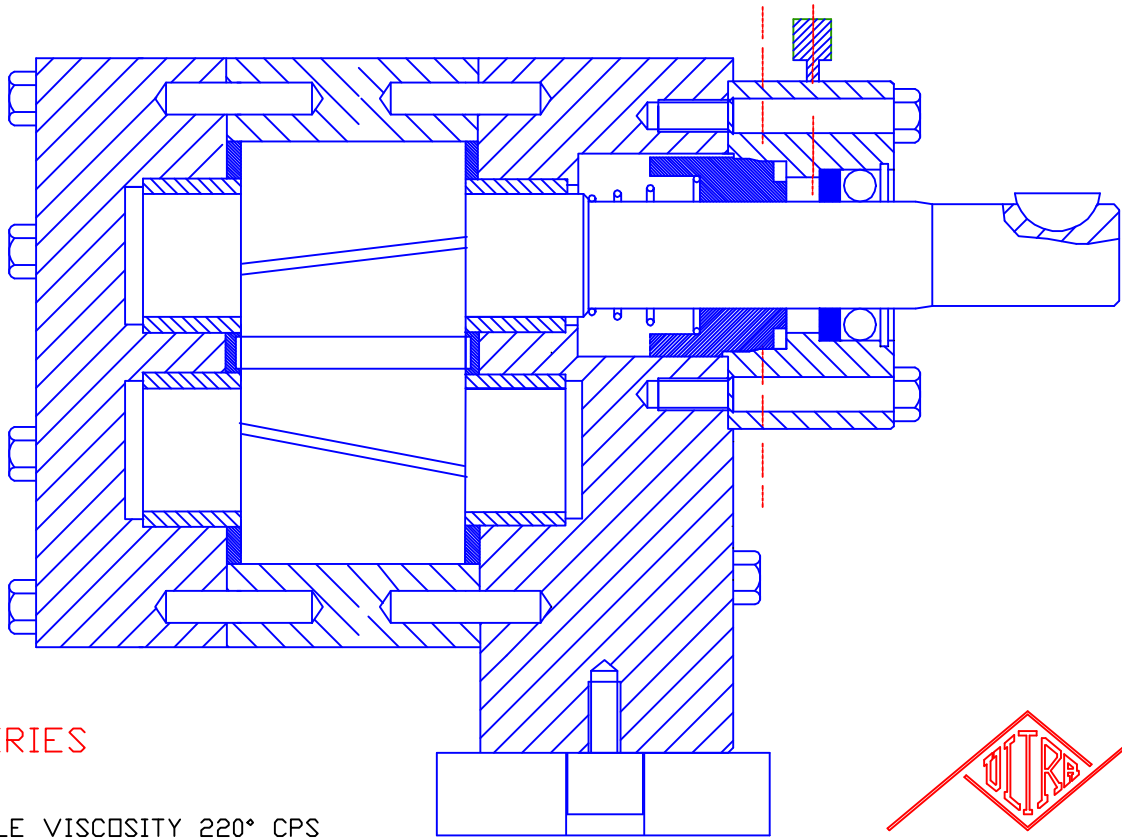
Heating Jacket, Quench, Flush: Optional  
 Available external Safety Relief Valve



### OPERATING PARAMETERS:

VISCOSITY MIN 0,5 MAX 1.000.000 cSt  
 PRESSURE MIN 0 MAX 30 BAR  
 CAPACITY MIN 2 MAX 3.000 cc/rev  
 TEMPERATURE MIN -40°C MAX +240°C

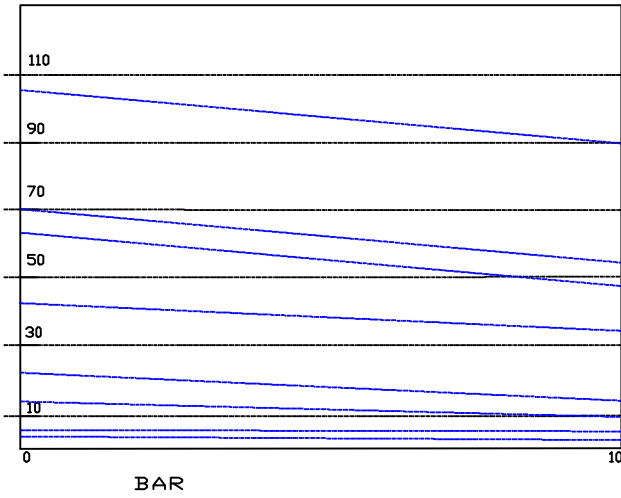
CC/REV	PUMP SIZE	A	B	C	D	E	F	G	H	J	K	M	N1	O	P	S	S2	T	U	V	Z	W	Y	Kq	
2	C 2	137	31	106	40	60	100	120	71	61	20	100	155	3	83	1/2"	1/8"	20	10		11	7	10	8	
4	C 4	137	31	106	40	60	100	120	71	60	20	100	155	3	83	1/2"	1/8"	20	10		11	7	10	8	
9	C 9	184	33	151	40	60	135	160	95	79	30	135	180	5	97	1/2"	1/4"	30	16	5	14	10	10	11.5	
14	C14	196	39	157	40	60	135	160	95	79	30	135	180	11	97	1/2"	1/4"	30	16	5	14	10	10	13	
28	C28	212	49	163	40	60	135	160	105	87	33	143	210	17	126	1"	1/4"	30	22	6	19	10	10	14.5	
42	C42	232	59	173	40	60	135	160	105	87	33	143	210	27	126	1"	1/4"	30	22	6	19	10	10	16	
70	C70	260	69	191	55	80	205	230	130	106	46	188	270	26	137	1 1/2"	1/2"	40	27	8	24	12	15	32	
105	C105	290	84	206	55	80	205	230	130	106	46	188	270	31	137	1 1/2"	1/2"	40	27	8	24	12	15	35	
200	C200	298	81	217	90	120	240	270	165	135	50	237	310	16	155	2"	1/2"	50	36	10	28	14	15	62	
300	C300	334	99	235	90	120	240	270	165	135	50	237	310	34	155	2"	1/2"	50	36	10	28	14	15	72	
400	C400	363	105	258	110	150	270	310	185	148	50	261	340	25	177	3"	3/4"	60	42	10	38	16	20	82	
500	C500	389	118	271	110	150	270	310	185	148	65	261	340	38	177	3"	3/4"	60	42	10	38	16	20	92	
740	C740	425	131	294	110	150	290	330	200	155	80	281	370	46	192	3"	3/4"	70	46	12	42	16	20	128	
AVAILABLE		K1 P1																							
1570	C1570	480	155	325	110	150	360	400	235	180	300	250	335	420	70	200	4"	3/4"	70	52	14	48	18	20	250
3000	C3000	555	193	362	330	370	345	385	295	220	--	--	415	505	80	--	4"	--	80	64	18	60	18	20	350



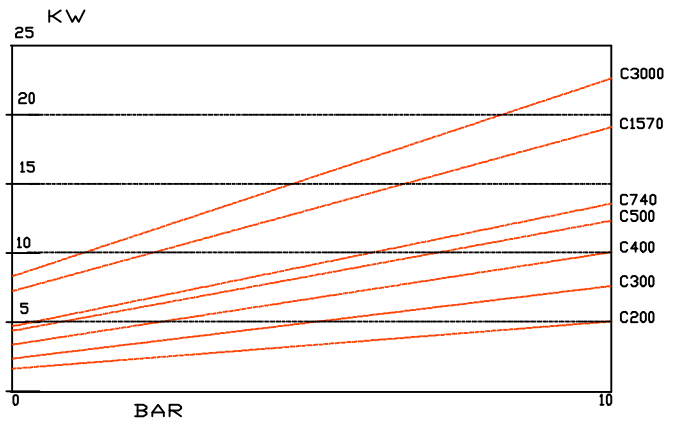
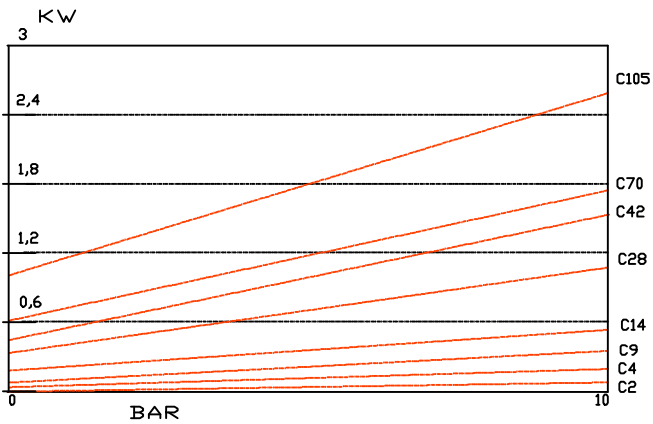
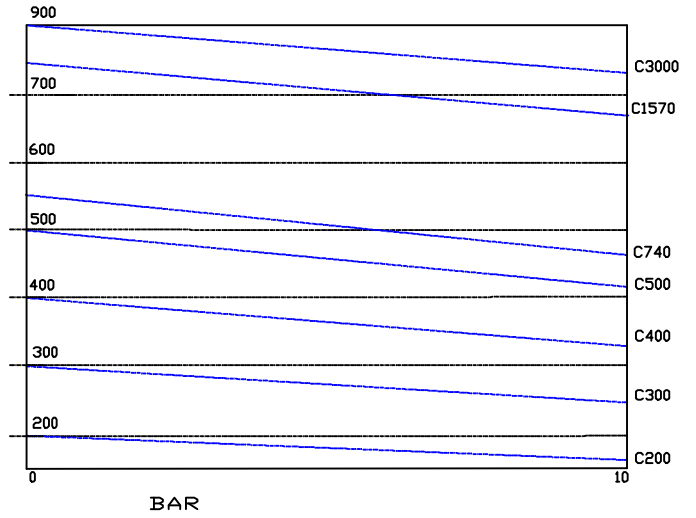
C SERIES

EXAMPLE VISCOSITY 220° CPS

LIT/ MIN



LIT/ MIN



ULTRA POMPE srl - Via Goldoni 37 - 20090 Trezzano S/N Milano Italia

Phone ++39 02 48464552 Fax ++39 02 48464544

WWW.ULTRAPOMPE.IT e-mail ULTRA@ULTRAPOMPE.IT